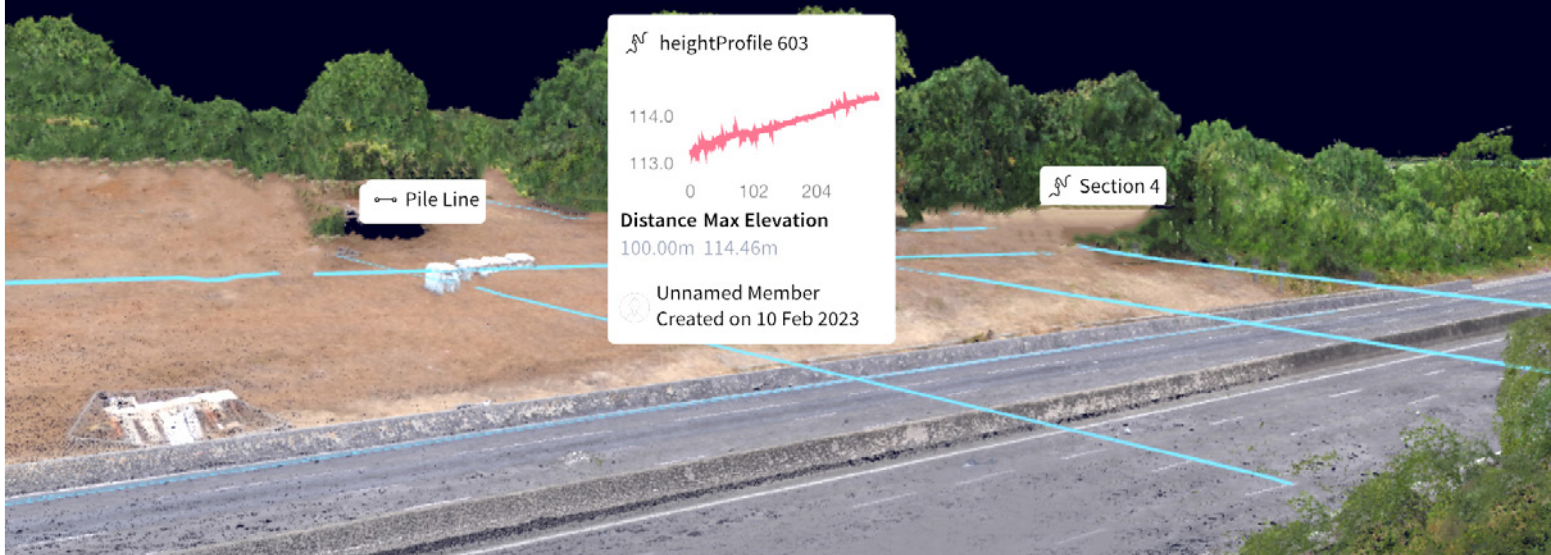


Octavius saves 6 months on Geotechnical scheme planning



Above Octavius teams measuring the height profiles of the embankment slippage from their desktop using a topographical survey in Sensat.

Challenge

An embankment slippage, caused by the natural movement of earth, risked infringing on the UK's busiest orbital motorway. To correct the issue, Octavius was given a standard unfinished design by the contractor. The team needed to complete these designs and make a swift start to the programme works due to the imminent bird nesting season. Which limited the timeframe to cut down vegetation. Missing this window would cause several months of delay.

£60,000

saving on
the project

//

Projects like these take teams multiple trips back and forth from the site, taking measurements and assessing the area. With Sensat we could conduct all of these from the **safety of our office.**

Sean Coleman

Innovation & Quality Manager at Octavius Infrastructure.

//

Solution

To expedite works, Octavius uploaded the standard detail design into Sensat and measured volumetric quantities from their desktop for muck away and detailed sections. The platform environment was also used for weekly coordination meetings held with the client, designers, temporary works coordinator, Octavius and subcontractors, for better cross-collaboration and project visibility.

Octavius utilised Sensat to visually plan their work within hours of receiving the final design. Teams generated pricing documentation faster and obtained approval within 6 weeks instead of the usual 3 months. Octavius then commenced work promptly, avoiding the bird nesting season. ■

Use cases



Accurate earthworks measurement

Sensat’s estimates came within 10% of standard 3D modelling which saved the team from doing these calculations in siloed software.



Minimised night shifts and disruption

Teams used Sensat to reduce the need for 3-night shifts which would be dangerous, disruptive, and cost upwards of £6,000 per shift.



Faster stakeholder approvals

Teams overlaid the plans and traffic management layouts over a 2D and 3D backdrop of the highway which was shared with designers, and stakeholders to relay plans and gain approvals faster.



Identified traffic management sharing opportunities

Teams identified existing contractors in the area to share traffic management plans, combine lane closures and minimise costs.



Above Octavius using desktop inspections to assess the site before stepping foot in the hazardous environment.

Earthwork estimates within 10%

Estimates came within 10% of standard 3D modelling



We halved the time it normally takes to hand plans back to the client for approval—what took us 6 weeks using Sensat typically has taken 3 months to complete. Sensat allowed us to begin work on site confidently and more promptly.

Sean Coleman

Innovation & Quality Manager at Octavius Infrastructure.



Discover how we can help your project tellmemore@sensat.co.uk