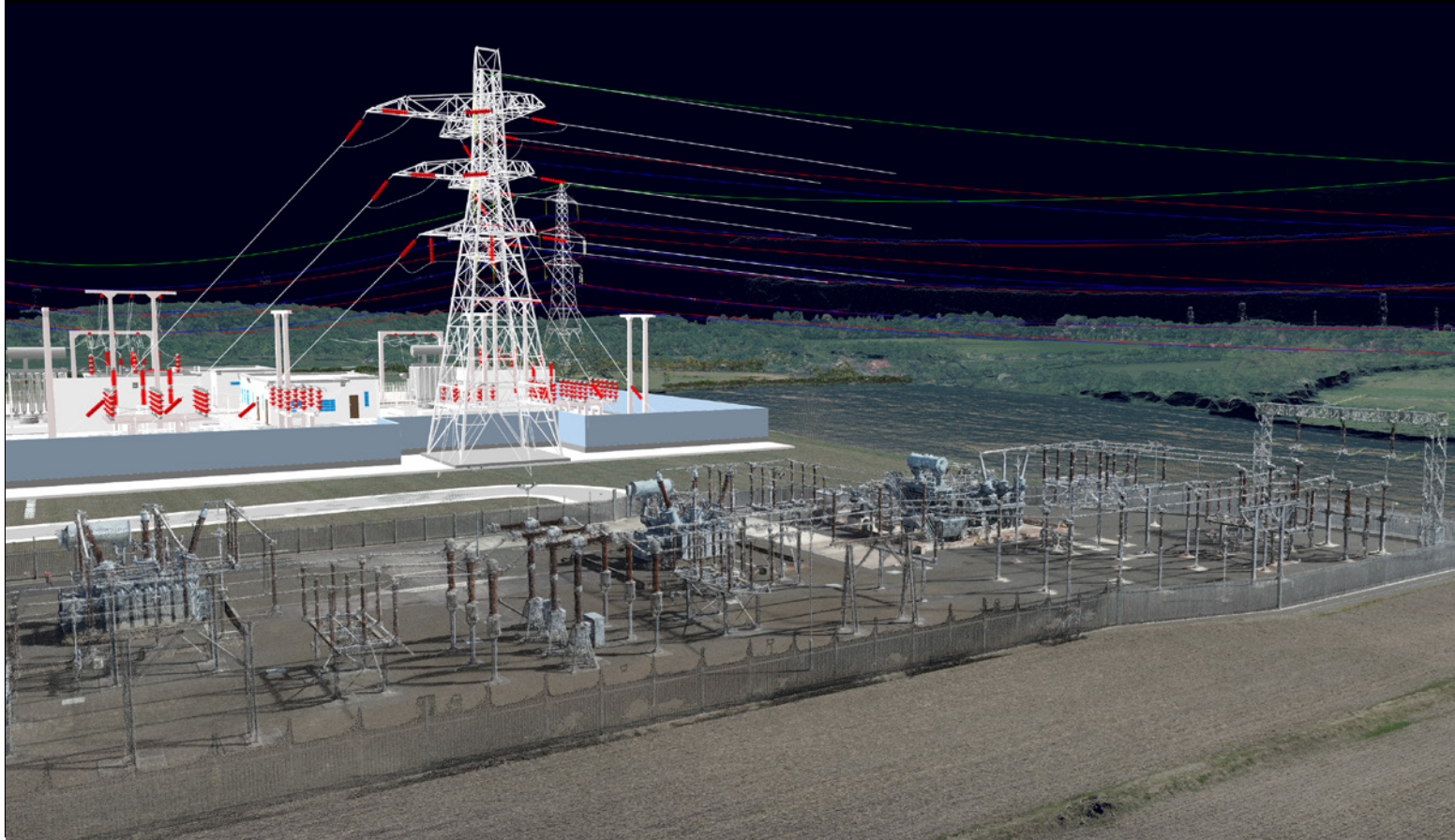


“I want to engage with the local planning authority and make them project allies”

Connections teams leverage Sensat’s visualisation platform to support virtual siting studies and option selection for substation upgrades.



Above Siting area visualised in Sensat used as a backdrop to conversations for stakeholder engagement

Challenge

Communicating technical information to non-technical stakeholders can be a challenge. Previously, communicating information has relied on lengthy back-and-forth meetings to convey constraints.

During the early-stage public consultation process on this project, the local planning authority (LPA) questioned the proposed substation’s placement, perceiving it as a biased decision.

Solution

Engage with the local planning authority and make them project allies

The Connections Team are engaging with the LPA using Sensat and the constraint information to explain the rationale behind the proposed route. Teams use Sensat as a backdrop for discussion to showcase the extensive considerations being taken into account during planning.

Connections team speeds up siting study using digital twin

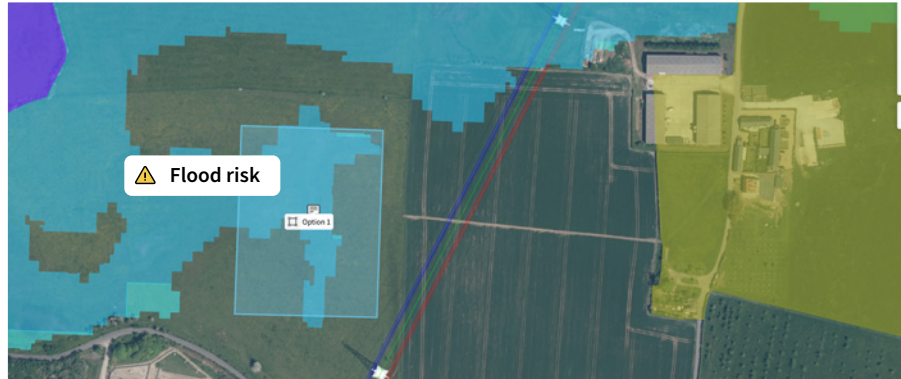
In Sensat, the Connections team have multiple information sets, including social and environmental constraints. Using the platform as a base map for explanation, they can demonstrate why other substation sites are less favourable. Thanks to this transparent approach from the Connections team, the LPA has quickly become a project ally knowing that the team are thoroughly investigating the area and options.

In an options selection meeting the team

Eliminated 3 options in 25 minutes

which would normally take 2.5 hours

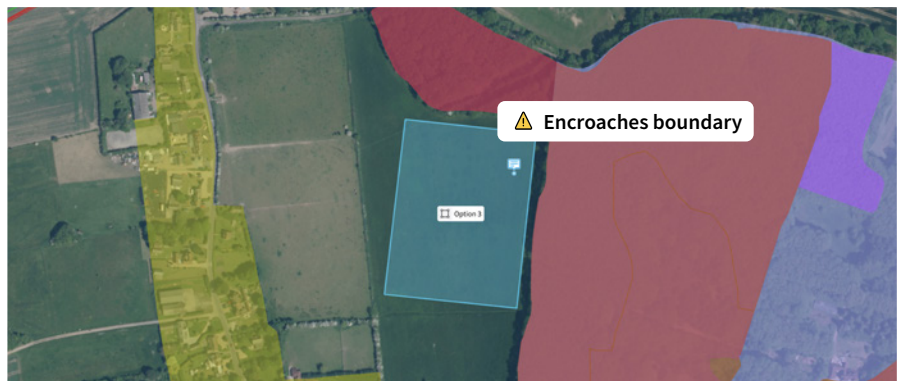
Option 1



Option 2



Option 3



Above Comparison of options overlaid as layers for assessment against the real-world backdrop.



Get in touch